



Product Specification Sheet

Arena Zoomspot Range



The range is comprised of three models of variable beam 2.0kW or 2.5kW ellipsoidal profile luminaires - Narrow, Medium and Wide.

Typically used in medium to large venues for controlled illumination from auditorium and onstage positions.

The ellipsoidal optical system provides a high output beam with a centre peak, the light distribution can be adjusted between a flat (2:1) and peak (3:1+) field.

Features

Well controlled, ellipsoidal light beam providing leading output in a very even field.

Narrow 9°-18°, Medium 14°-32° and Wide 20°-37°.

Interchangeable lens trays between Medium and Wide luminaires.

Rotatable pattern holder, to align pattern projections on stage with out having to adjust the luminaire.

Infinite range of masking angles provided by two plane rotatable shutter system.

Cranked yoke with adjustable balance point.

'Swing-down' door for easy access to lamp or cleaning. Isolates the mains supply when opened.

Choice of GY16 lamp socket for CP72, 2.0kW lamp or G22 lamp socket for CP91, 2.5kW or CP92, 2.0kW lamp.

Smooth focus movement from 'Posi -slide' focus system, no metal to metal contact.

Approvals

Fully tested and compliant to CE standards.

Lamps: 220V -240V

GY16 lamp socket / 2000W

CP72
50,000 lumens 400 hours average life

G22 lamp socket / 2500W

CP91
65,000 lumens 400 hours average life

G22 lamp socket / 2000W

CP92
50,000 lumens 400 hours average life

Order codes

10AZS2000N
Arena Zoomspot Narrow - GY16

10AZS2500N
Arena Zoomspot Narrow - G22

10AZS2000M
Arena Zoomspot Medium GY16

10AZS2500M
Arena Zoomspot Medium - G22

10AZS2000W
Arena Zoomspot Wide - GY16

10AZS2500W
Arena Zoomspot Wide - G22

20IRIS Iris

20AZGH Rotatable pattern holder

20ALAM Arena 14°-32° Medium lens tray

20ALAW Arena 20°-37° Wide lens tray

20SM25 Lens safety mesh - Narrow

20SM20 Lens safety mesh - Medium & Wide

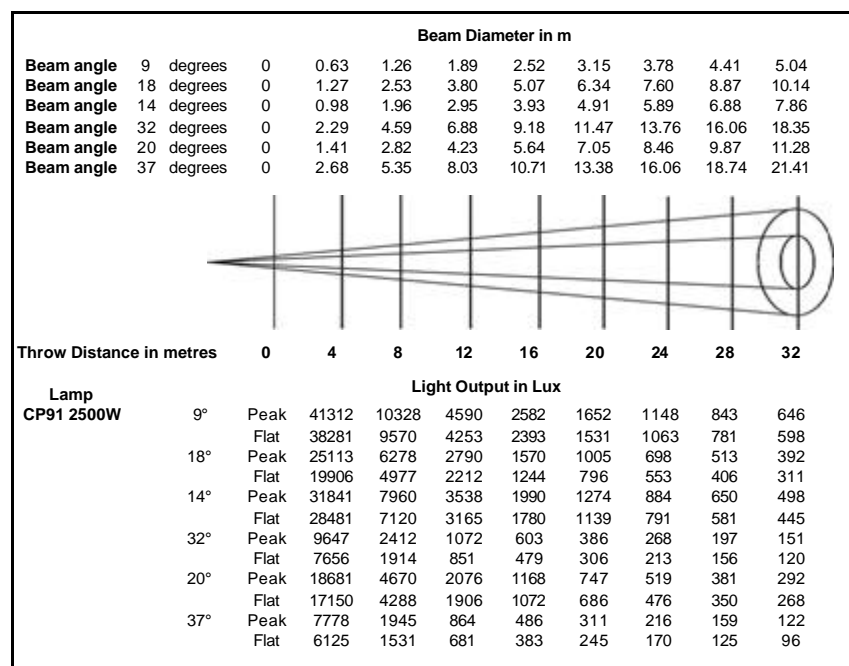
20HC Suspension hook/clamp

20SC Safety bond



Photometric data

Tests conducted using a standard CP91, 2500W, 240V, 65,600 lumens lamp.



Physical data

Weights:

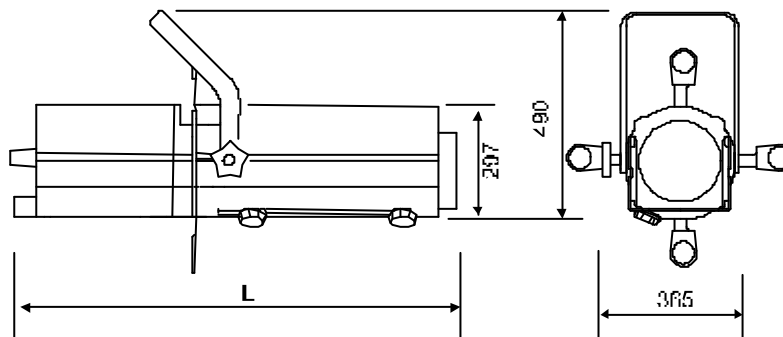
Model:	9°-18°	14°-32°	20°-37°
Length:	1170mm	960mm	960mm
Weight	20.3kg	19.7kg	19.7kg
Packed:	23.0kg	22.5kg	22.5kg
Cubic:	0.175	0.144	0.144

Colour Frame Size:

245mm x 245mm Medium and Wide
245mm x 310 Narrow

Pattern size: A

Included: 4x shutters, 1x colour frame, 1x M12 nut & bolt set and instruction leaflet.



Selecon reserves the right to change the specifications without notice (June 2008).